



BATTERY RACK

INSTALLATION INSTRUCTIONS

IMPORTANT: To reduce the risk of serious injury, read and understand this entire guide before beginning any installation.

Contents

BEFORE YOU BEGIN:	3
SAFETY WARNINGS:.....	3
Hardware:.....	3
Tools Required:.....	3
COMPONENT OVERVIEW	4
FRAME SETUP	5
FRAME SETUP (cont.).....	6
SHELF ASSEMBLY	7
SHELF ASSEMBLY (cont.).....	8
FINAL NOTES	9
WARRANTY	11

BEFORE YOU BEGIN:

1. Check your inventory to be sure you received your entire order. If there are any missing or damaged parts, contact your **Dealer** or **Borroughs Corporation Customer Service Manager**.
2. Read and understand the entire installation instructions prior to beginning the install.

SAFETY WARNINGS:



This symbol is used to address practices not related to personal injury.



A potentially hazardous condition exists that may result in death or serious injury, property damage, or destruction if instructions are not strictly observed.

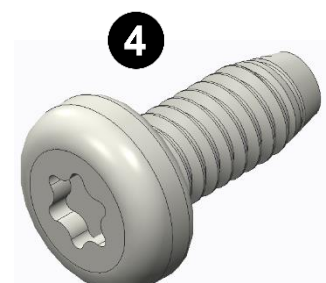
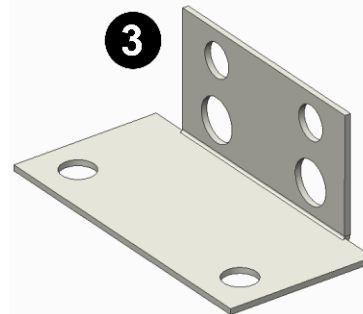
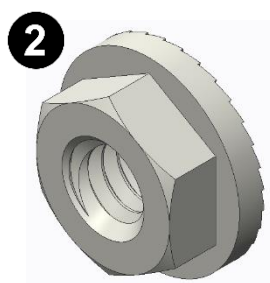
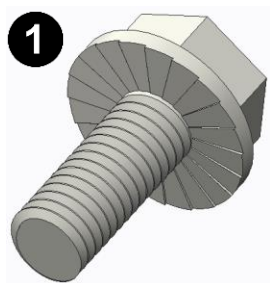


This symbol is used to address practices not related to physical injury.

Once installation is completed, a copy of the installation instruction booklet **MUST** remain with the customer.

Hardware:

	Item #	Description	Qty
1	94383-53	Screw 1/4-20 X 5/8 Serrated Flange Grade 5 Zinc	42
2	94394-71	Nut 1/4-20 Serrated Flange Grade 5 Zinc	42
3	10103-00	Footplate Rivet-Span	4
4	MDC-0722	Screw #8-32 X 3/8 Torx Thread Forming MDC	72



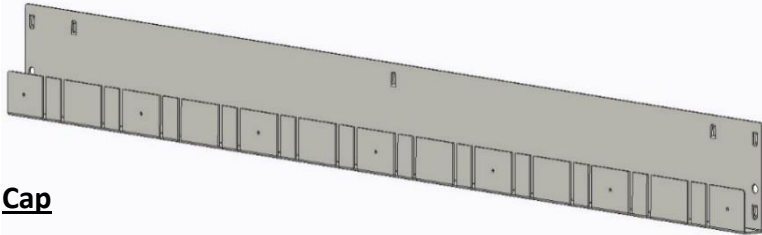
Tools Required:

- 1) 3/8in. & 7/16in. Wrench and Sockets
- 2) Drill or Impact Driver with T20 Torx Bit & Extender
- 3) Rubber mallet or dead blow hammer

COMPONENT OVERVIEW

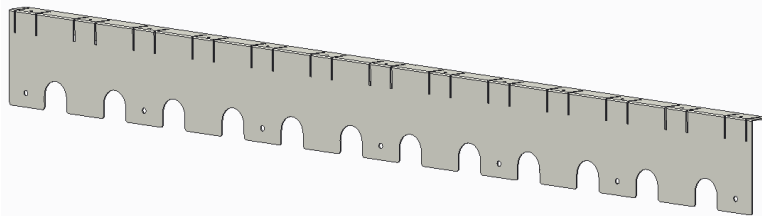
Cross Member

(RSS-0102)



Cap

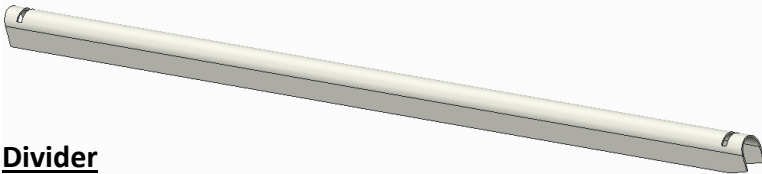
RSS-0103



U-Channel

RSS-0104 (48"D)

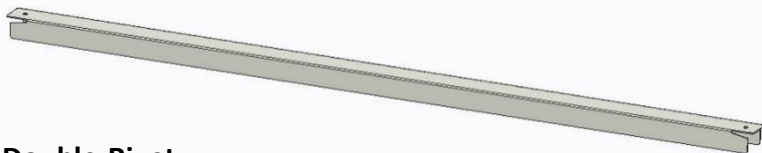
RSS-0105 (36"D)



Divider

RSS-0106 (48"D)

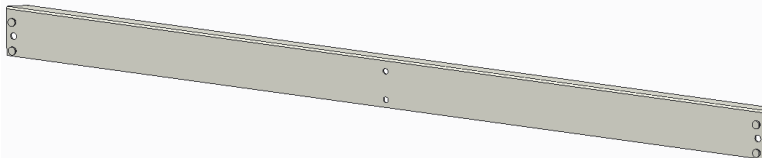
RSS-0107 (36"D)



Double-Rivet

10068-07 (48"D)

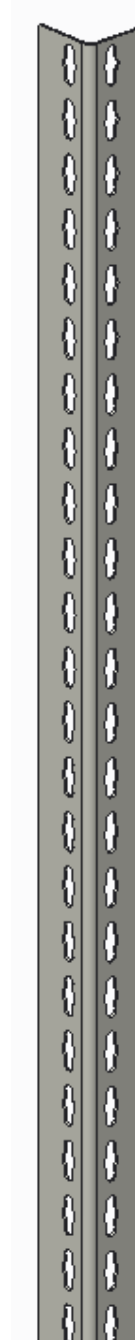
10036-05 (36"D)



Angle Post

10060-00 (72")

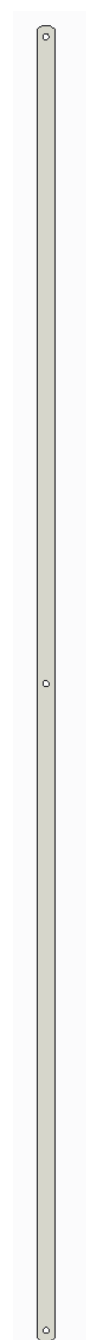
10060-02 (96")



Cross Brace

05165-00 (48"D)

13828-00 (36"D)



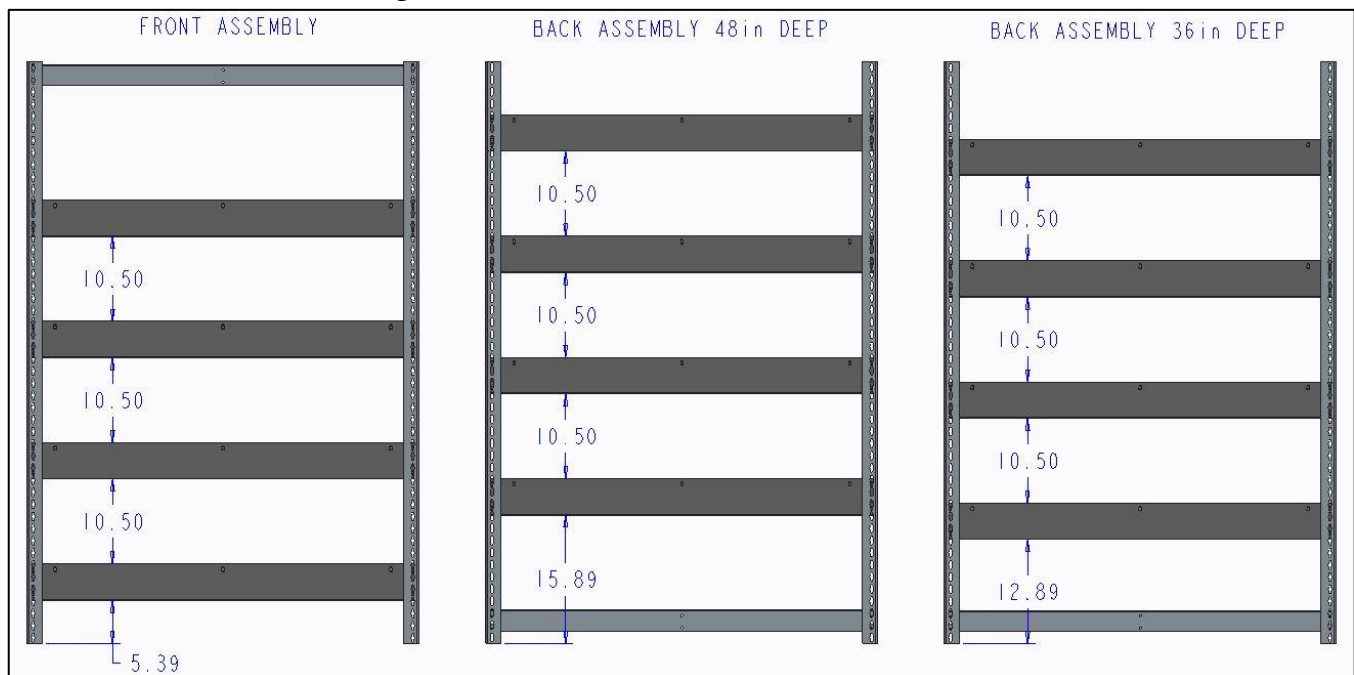
FRAME SETUP



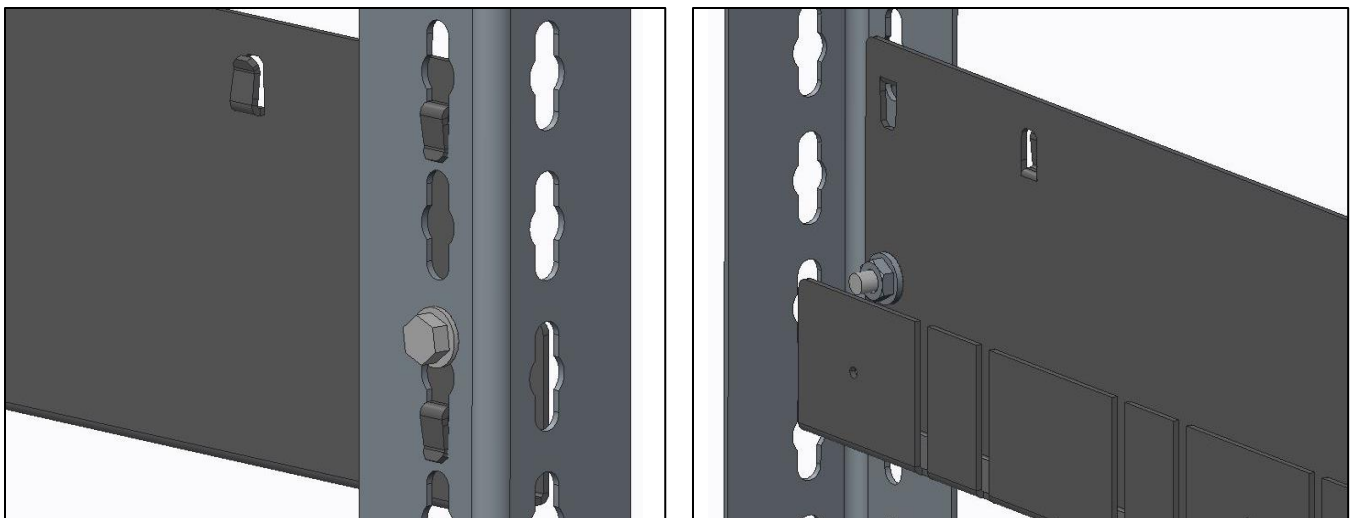
Failure to use supplied hardware will compromise the rigidity and strength of the structure.

STEPS

- 1 Start by assembling the front and back frames of the battery rack. Each frame will consist of (2) angle posts, (1) double rivet, and (4) cross members). Front frames have a double-rivet beam fastened at the top and back frames have the double-rivet fastened at the bottom. See below for an elevation drawing.



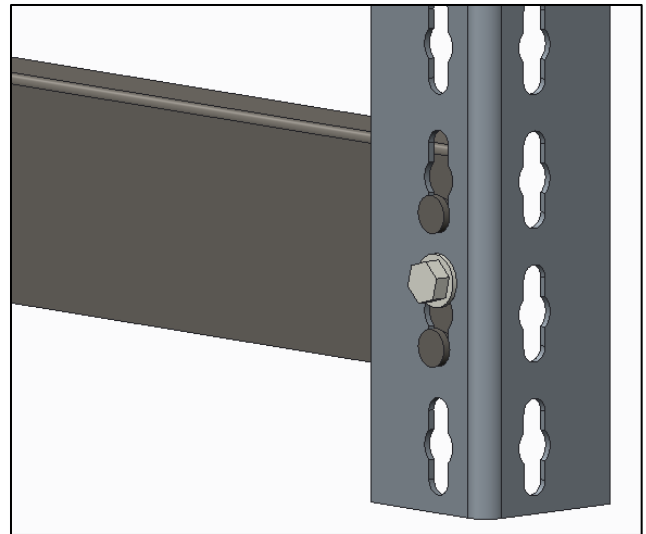
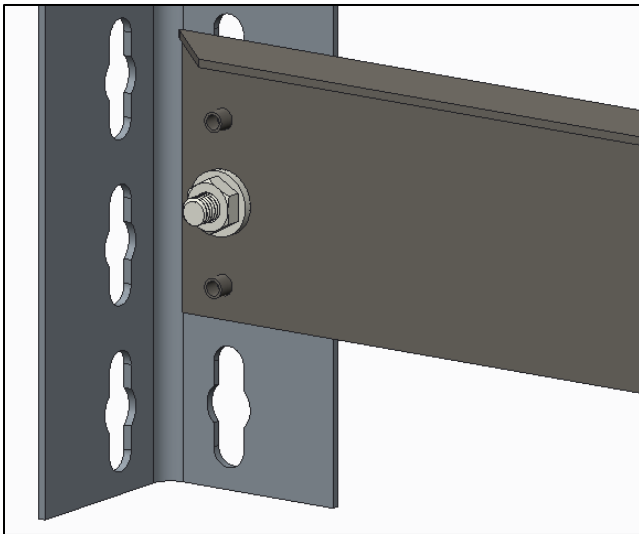
- 2 Cross members are lanced in place. Once in position, tapping with a dead blow hammer may be required to fully seat it. Refer to the pictures below for correct cross member orientation.



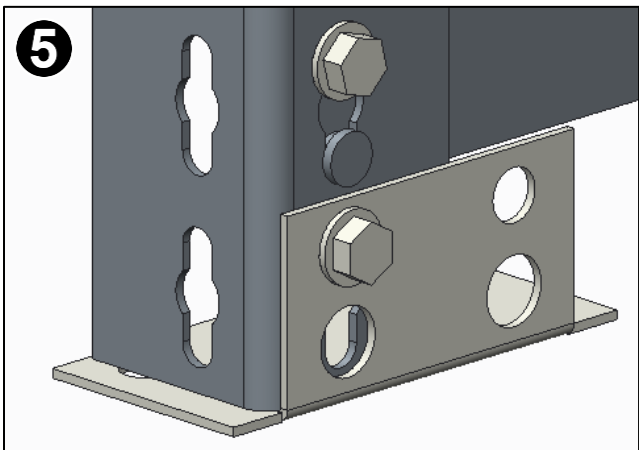
FRAME SETUP (cont.)

STEPS

- 3** Double rivet beams are held in place by rivets and must be hammered into position as well. See picture below for correct orientation of the beam.



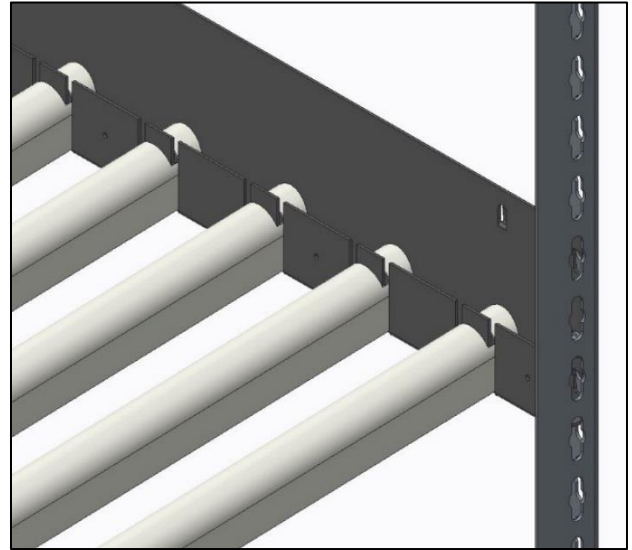
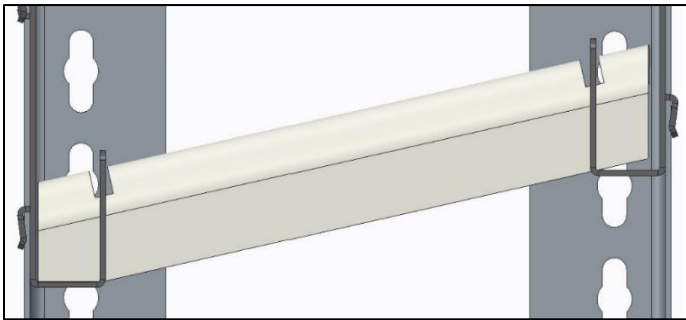
- 4** Once both front and back frames are assembled, link the two with four double rivet beams at the top and bottom of both sides. Secure all cross members and double rivet with the supplied ¼-20 hardware (Items 1 & 2 on the hardware list).
- 5** Footplates can be assembled at this time and the unit moved into its final position. Anchor to the floor if needed.



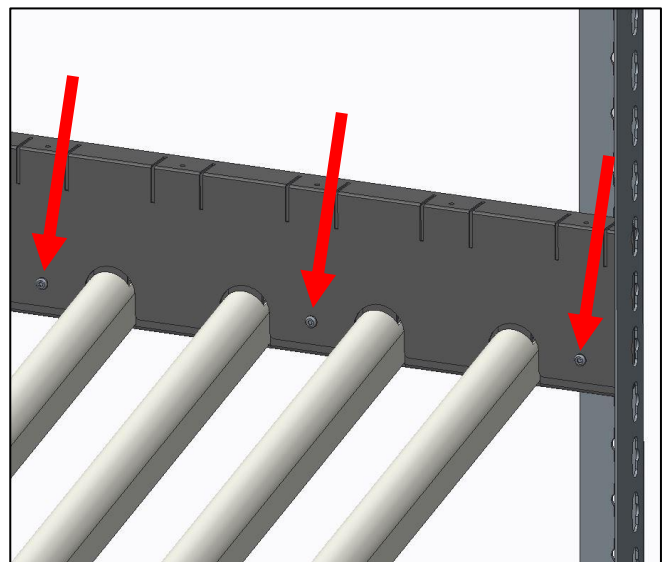
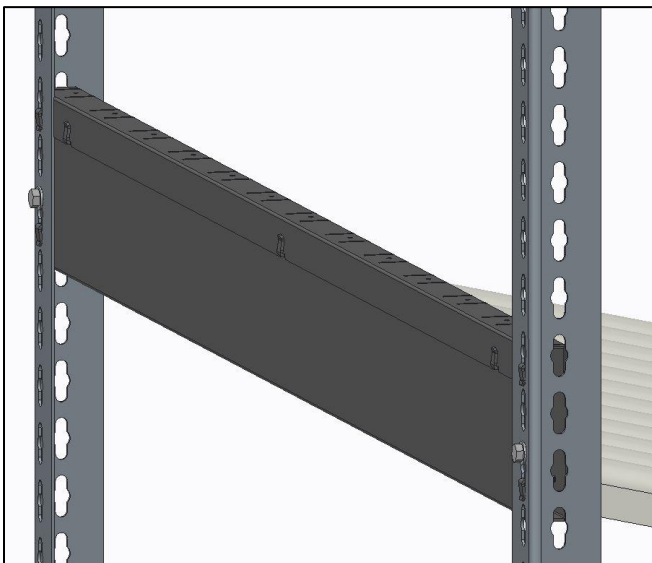
SHELF ASSEMBLY

STEPS

- 1** Start the shelf assembly process by installing all the U-channels. Each shelf will hold 12 channels in total. No hardware is needed for these. See detail below for correct orientation.



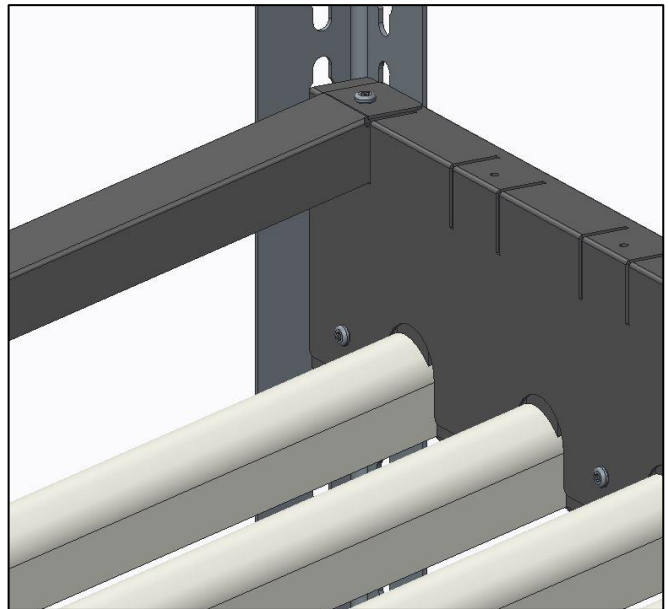
- 2** Once all 12 U-channels have been installed, caps can be put in place. Once again, a rubber or dead blow hammer may be needed to engage the cap into the lances of the cross members. Seven thread forming screws hold each cap securely into the cross member (item 4 on the hardware list).



SHELF ASSEMBLY (cont.)

STEPS

- 3** The final step in the shelf assembly process is installing the end guards / dividers. The battery rack system comes standard with only two dividers per level and should be installed at the ends. This will prevent any products on the shelf from falling off the side. Each divider is fastened in place with two thread forming screws (item 4 on the hardware list). See pictures below.



- 4** Now that you have completed the first shelf level, repeat the same steps for the remaining three shelf assemblies in the system.



CROSS BRACES / COMPLETION

- 1** Before your battery rack can be put into service, cross braces must be installed. Five ¼-20 nuts and bolts will be used per side (Items 1 & 2 on the hardware list). Make sure the unit is square, then tighten all brace hardware.
- 2** Recheck that all hardware has been fastened securely and the unit is anchored to the floor if needed.



ACCESSORIES / OPTIONS

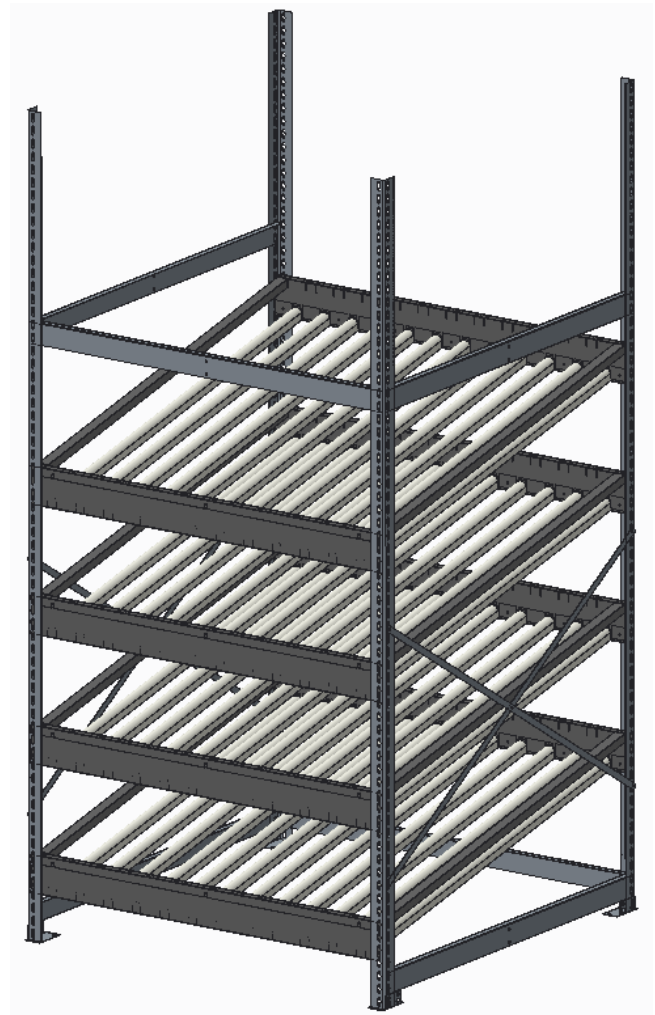
1 Battery racks are available in 72in and 96in tall. 96in units contain the same 4 levels with extended posts for bin-supported mezzanine options.

2 Drip pans are also available where the possibilities of battery acid spills are a concern. Only one drip pan is needed per unit and is placed under the bottom shelf on the floor.

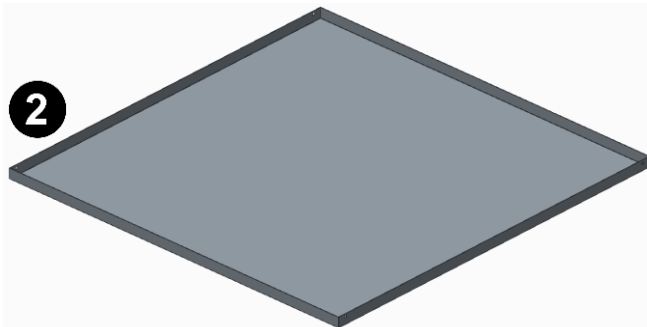
Drip Pans	
Size	Part #
48in x 36in	A1-BRDP4836
48in x 48in	A1-BRDP4848

3 Lane dividers are another option offered to assist in organization. Two dividers are included per shelf, but more can be ordered individually with the below part numbers.

Lane Dividers	
Size	Part #
36in	A1-BRD36
48in	A1-BRD48



Once installation is completed, a copy of the installation instruction booklet **MUST** remain with the customer.





WARRANTY

Borroughs Corporation extends to the original purchaser from the date of purchase a limited lifetime warranty for Borroughs' Automotive Workstations and Modular Drawer Cabinets against manufacturing defects in material and workmanship. For all other products Borroughs extends to the original purchaser from the date of purchase a 5-year limited warranty against manufacturing defects in material and workmanship.

If a Borroughs product fails to perform because of a manufacturing defect, Borroughs will examine it. If found defective, it will be repaired or replaced at our option. This warranty applies only to Borroughs products acquired directly from Borroughs Corporation or from Authorized Borroughs Dealers.

This warranty does not apply to any product which has been subject to misuse, negligence, or accident; has been damaged in shipment, storage, or installation; has been misapplied or has been modified or repaired by unauthorized persons or been repaired with non-standard Borroughs replacement parts. This warranty specifically excludes claims for indirect, incidental, or consequential damages arising in any way from a product defect. This warranty is exclusive, and exists in lieu of all other warranties, either expressed or implied.

This warranty gives you specific legal rights; you may also have other rights which may vary from state to state.

Contact your Borroughs Selling Dealer, to obtain warranty service. You must make a written claim. Provide a copy of your purchase record and a written description of the warranty problem with your claim.

If you are unable to contact your Dealer, contact:
Borroughs Corporation, Customer Service Manager,
3002 N. Burdick St., Kalamazoo, MI 49004-3483.
Phone: 1-800-748-0227