

# Automotive Work Stations

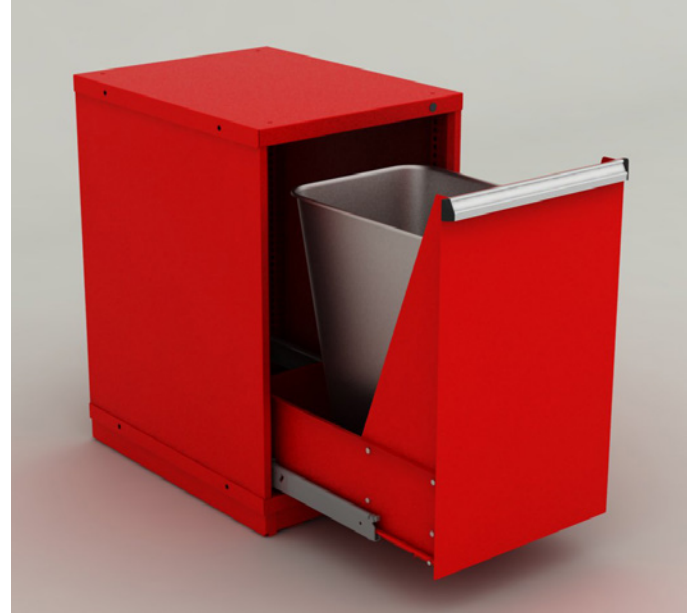
## AWS TRASH DRAWER CABINET

### Design Specifications

- Housing design based on a typical 23W x 29D x 40S Modular Drawer unit only.
- Housing Base options will be "Forktruck" (FT) and "Stainless Leg" (SL) only.
- Housing latching will be "Multiple Drawer" (MD) or "No Lock" (NL) only.
- Drawer construction similar to a typical Lift Control unit w/o front cutouts or significant internal structure.
- Standard 400Lb. Fullerer drawer suspension.
- Designed for a minimum 7-gallon plastic trash container (not included).
- Pre-assembled unit at Borroughs w/ typical MDC packaging.

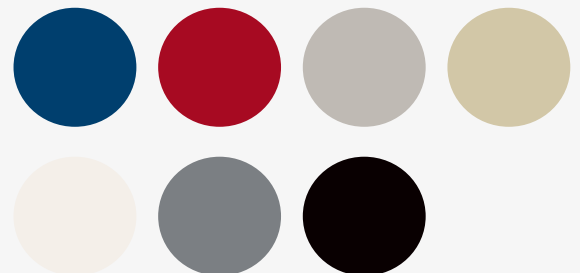
### Part Numbers & Descriptions

- **A1-232940FT-TDC**  
Trash Drawer Cabinet Fork Truck Base
- **A1-232940SL-TDC**  
Trash Drawer Cabinet Stainless Leg Base



AWS Trash Drawer Cabinet

Available in seven (7)  
Borroughs standard colors.



 **Borroughs**

[borroughs.com](http://borroughs.com)



Made in the USA