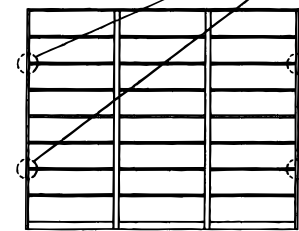
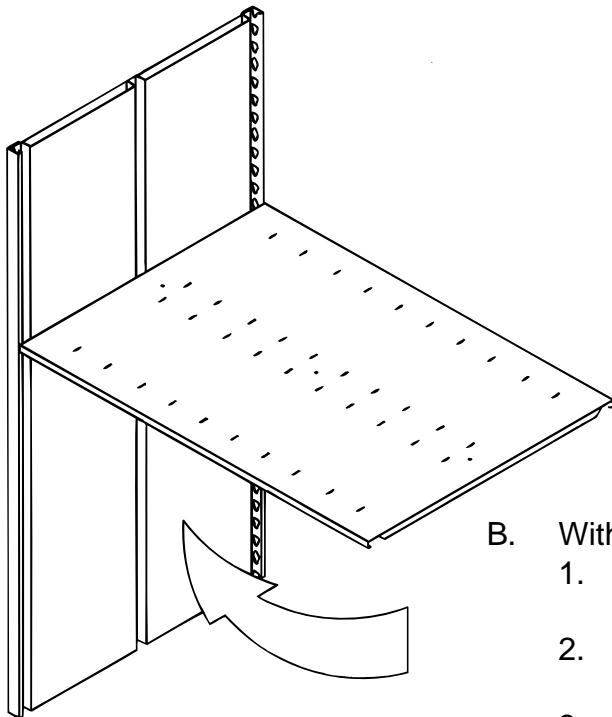


RECORD MASTER® CASE-STYLE END PANEL CLIP INSTALLATION INSTRUCTIONS

A. Panel clips need to be installed only on angle (row end) uprights of double face units. Double face units are 18", 24" & 30" deep. The clips are not needed for single face (9", 12" or 15" deep) units.

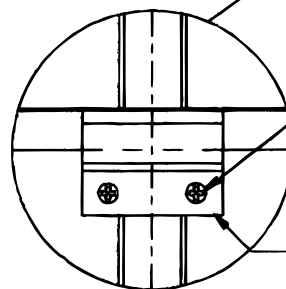
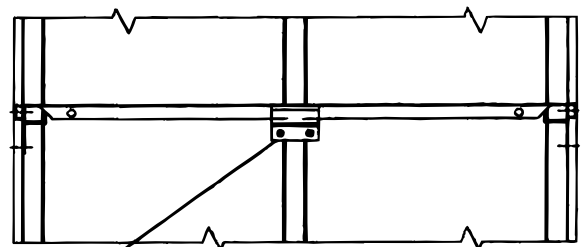
Two (2) clips are provided per angle upright. Install (1) clip at the second shelf down from the top and (1) clip at the second shelf up from the base shelf.



**SHELVING UNITS
(REDUCED SCALE)**

B. With shelf in position -

1. Hold panel clip in place (centered front to back) against underside of shelf and mark hole locations.
2. Drill 7/64 (.109) dia. pilot holes in panel for self-threading screws.
3. Insert screws through clip holes and thread into the panel until screws are secure.



SELF THREADING SCREWS

END PANEL CLIP

VIEW ENLARGED

53-50530-000
FEBRUARY 1994

BORROUGHS CORPORATION
3002 N. BURDICK STREET • KALAMAZOO, MI 49004-3483
800-748-0227 • FAX: 616-342-4161 • CANADA: 800-968-0162